



## CommandCenter Secure Gateway

Centralized access and control of your entire IT infrastructure

### CC-SG E1

- 2U form factor
- Dual power supplies

### CC-SG V1

- 1U form factor
- Single power supply

## Smart, Secure Access and Control of Distributed IT Assets

### Now you can consolidate access to both physical and virtual servers with a single, secure appliance.

Raritan's CommandCenter Secure Gateway (CC-SG) provides IT organizations with integrated, secure and simplified access and control of all technology platforms at the application, operating system and BIOS-level. By managing all the devices in your centralized, distributed data centers and remote locations, it lowers the cost of purchasing, implementing and maintaining additional access points and eliminates truck rolls.

What's more, by offering a consolidated view from a single point of access, it helps streamline operations, and improves staff efficiency by saving time when responding to trouble tickets.

Designed for large enterprises with multiple datacenters as well as medium and smaller size IT server rooms and lights-out network operation centers, this feature-rich appliance includes:

- ▶ Secure, single sign-on to a single IP address for managing all of Raritan's Dominion® series, Paragon II and Dominion PX intelligent PDUs
- ▶ Single point of access and audit to physical servers (including blade systems and servers), virtual machines and VMware™ infrastructure such as ESX server and VirtualCenter environments
- ▶ Centralized, role-based user access policy management
- ▶ The ability to monitor, diagnose and resolve infrastructure problems
- ▶ HTML Access Client interface, which allows the user to easily locate managed equipment in customizable views, including favorites and recently accessed nodes
- ▶ Remote access as well as power control using HP integrated Lights-Out (iLO), Dell Remote Access Control (DRAC), IBM Remote Supervisor Adaptor (RSA), and IPMI service processors and RDP, VNC, SSH, Telnet and Web Browser applications
- ▶ Virtual Media view only, deny access, or full access control
- ▶ Consolidated audit trail, including detailed activity reports

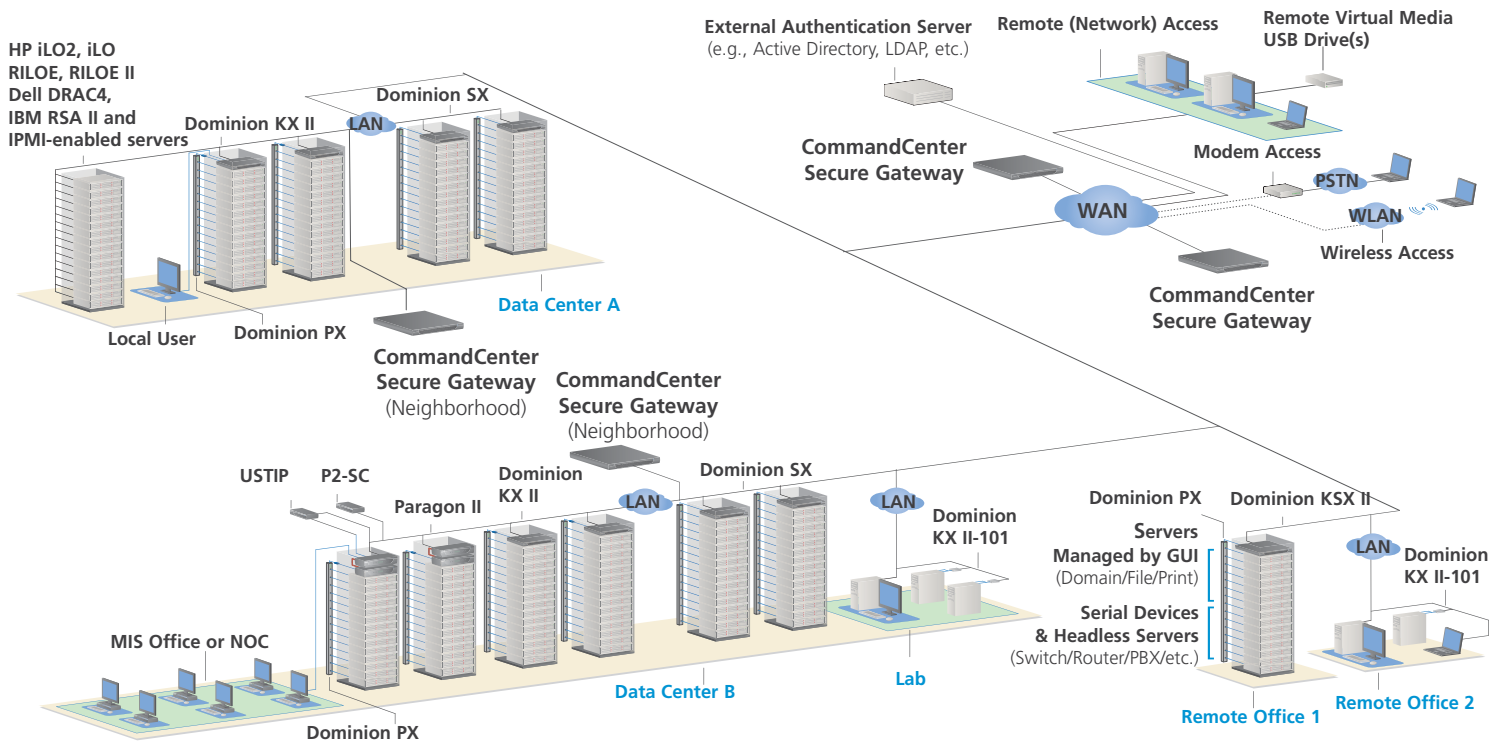
### Centralized access and control for distributed IT assets

- ▶ Node view, which allows users to easily identify and access any target system through a variety of interfaces, including in-band and out-of-band KVM, Serial, embedded or in-band software applications, as well as power control
- ▶ Comprehensive reporting capabilities

# A New Dimension in IT Infrastructure Management

## Robust security

- ▶ Low security profile, Linux®-based appliance architecture
  - ▶ A powerful policy management tool allows access and control based on a broad range of user customizable criteria, including time of day, physical location, application, operating system, department and function
  - ▶ Available 128-bit and 256-bit AES encryption for end-to-end node access activity through AES-enabled Dominion devices
  - ▶ Support for a broad range of authentication protocols, including LDAP, Active Directory®, RADIUS and TACACS+ in addition to local authentication and authorization capabilities
- ▶ Ability to import user groups from Active Directory servers for user authentication
  - ▶ Support for Second Factor Authentication with SecureID on RADIUS servers
  - ▶ IP-based Access Control Lists (ACL), which grant or restrict user access by IP address
  - ▶ Proxy mode for secure access to devices through firewalls/VPNs
  - ▶ Strong user password authentication, SAS 70 compliance for configurable amount of failed login attempts and user ID lock out parameters



# Secure, Centralized Access and Control

## Integrated virtualization support

- ▶ Consolidated access to physical and virtual servers, including centralized audit and reporting
- ▶ Intuitive virtualization discovery function allowing import and configuration of a virtual environment with a few simple steps, including configurable RDP, VNC or SSH application selection with single sign-on capabilities
- ▶ Simple virtual machine, virtual host server and VirtualCenter information layout with relevant data and hyperlinks allowing easy navigating in the virtualization topology
- ▶ Easy setup of access to remote management of virtual host servers using Dominion KVM over IP switches and intelligent power distribution units

## High availability and redundancy

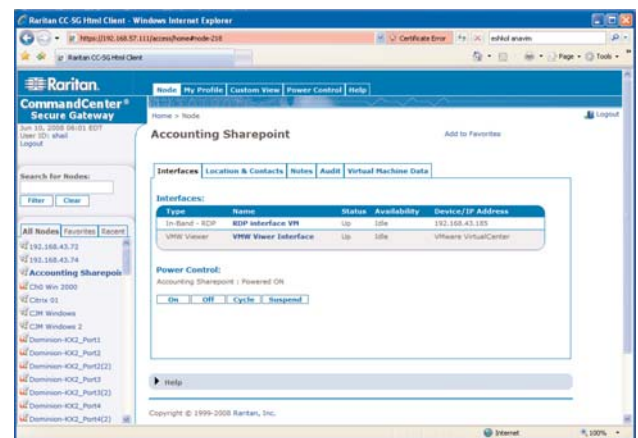
- ▶ Appliance redundancy through primary and secondary CommandCenter Secure Gateway deployment on different subnets and/or geographical locations
- ▶ CC-SG "Neighborhood" configuration allows for a collection of up to 10 CC-SG units, deployed and working together to serve the access and control needs of the enterprise. Enables improved performance by distributing device and node access across CC-SG units within a data center, regionally or organizationally. Can be combined with a primary/backup implementation for further redundancy.
- ▶ Hot-swappable RAID memory setup and dual hard drives

## Ease of management for IT administrators

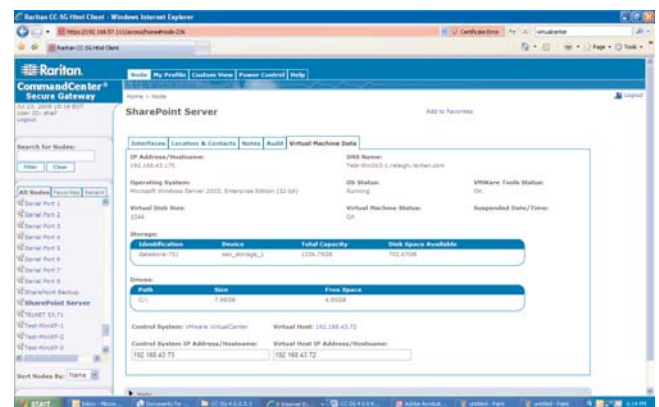
- ▶ Determine individual user access policies to Universal Virtual Media on supported devices
- ▶ Guided setup of user group and security policies
- ▶ Backup, copy and restore Raritan device configurations
- ▶ Syslog integration
- ▶ SNMP TRAPS/event support
- ▶ Raritan KVM, Serial and power device discovery with device availability status, health updates and alarms for Dominion Series, Paragon and IP-Reach®
- ▶ Central storage of firmware for Raritan KVM and Serial switches for upgrading devices through the centralized and automated upgrade manager function
- ▶ Task Manager and Notification Manager to schedule tasks and review status and results

## Ease of management for users

- ▶ Intuitive and simplified view allowing for both node access and power control
- ▶ Highly customizable views
- ▶ Secure Chat feature allows users to troubleshoot problems collaboratively
- ▶ Intuitive, feature-rich HTML client
- ▶ Security hardened



Always connect to virtual servers even when these are moved from one virtual host to another. Issue on, off, cycle, or suspend virtual power commands, using the control buttons.



Key information such as network, storage and allocated resource is displayed for each virtual machine. Additionally, one-click hyperlink is available to view and connect to the virtual host and control system managing this virtual machine.

# Specifications



CC-SG E1

CommandCenter Secure Gateway	CC-SG V1	CC-SG E1
Form Factor	1U	2U
Dimensions (DxWxH)	440 x 615 x 44mm	440 x 699 x 89mm
Weight	10,8 kg	20 kg
Power	Single Supply (1 x 300 watt)	Dual Supply (2 x 500 watt)
Operating Temperature	10 - 35° C	10 - 40° C
Mean Time Between Failure (MTBF)	38,269 hours	53,564 hours
KVM Admin Port	(DB15 + PS/2 or USB Keyboard/Mouse)	(DB15 + PS/2 or USB Keyboard/Mouse)
Serial Admin Port	DB9	DB9, DB10
Console Port	2 x USB 2,0 Ports	2 x USB 2,0 Ports
<b>Hardware</b>		
Processor	AMD Opteron 146	2 x AMD Opteron 250
Memory	2 GB	2 x 2 GB
Network Interfaces	(2) 10/100/1000 Eth. (RJ45)	(2) 10/100/1000 Eth. (RJ45)
Hard Disk & Controller	(2) 80 GB SATA @ 7200 rpm, RAID 1	(2) 74 GB SATA @ 10000 rpm, RAID 1
CD-ROM drive	DVD-ROM	DVD-ROM
<b>Remote Connection</b>		
Protocols	TCP/IP, UDP, RADIUS, LDAP, TACACS+, SNMP, SNTP, HTTP, HTTPS	
Warranty	<b>Two years.</b> In addition Raritan offers two years extended warranty.	

## One view of the entire enterprise



- Simplified "One Click" access
- Consolidated access and power control on a single screen
- Sophisticated policy management with granular privileges

## Scalable and flexible access

- ▶ Supports third-party HP iLO2, IBM RSA II, Dell DRAC4 devices and IPMI-enabled servers, secure, consolidated, in-band access methods like RDP, VNC, TELNET and SSH, as well as generic web browser interface
- ▶ SSH support for CLI access to serial targets connected to Dominion SX and KSX II

**Ready to manage smarter?**  
**Do it with CommandCenter Secure Gateway.**  
 Call +31 (0)10 284 4040 or visit [Raritan.eu/cc-sg](http://Raritan.eu/cc-sg)



©2009 Raritan Inc. All rights reserved. Raritan®, Know more. Manage smarter.™, CommandCenter®, Dominion® and IP-Reach® are registered trademarks of Raritan Inc. or its wholly-owned subsidiaries. All other marks are trademarks or registered trademarks of their respective owners.

Raritan is a leading provider of secure IT infrastructure management solutions that provide IT directors, managers and administrators the control they need to increase data center productivity, enhance branch office operations and increase overall power management efficiency. In over 50,000 locations around the world, our integrated secure in-band and out-of-band server access, control and power management products help companies better monitor and manage server access, utilization and energy consumption. Our intelligent PDUs offer remote power control and monitoring at the rack-and-device level, empowering data center owners with information to improve uptime and capacity planning, and efficiently utilize energy to save power and money. Raritan's OEM division provides embedded hardware and firmware for server and client management, including KVM over IP, IPMI, intelligent power management and other industry standards-based management applications. Raritan has 38 offices worldwide, serving 76 countries. The European head office is located in The Netherlands. For more information, please visit [Raritan.eu](http://Raritan.eu)